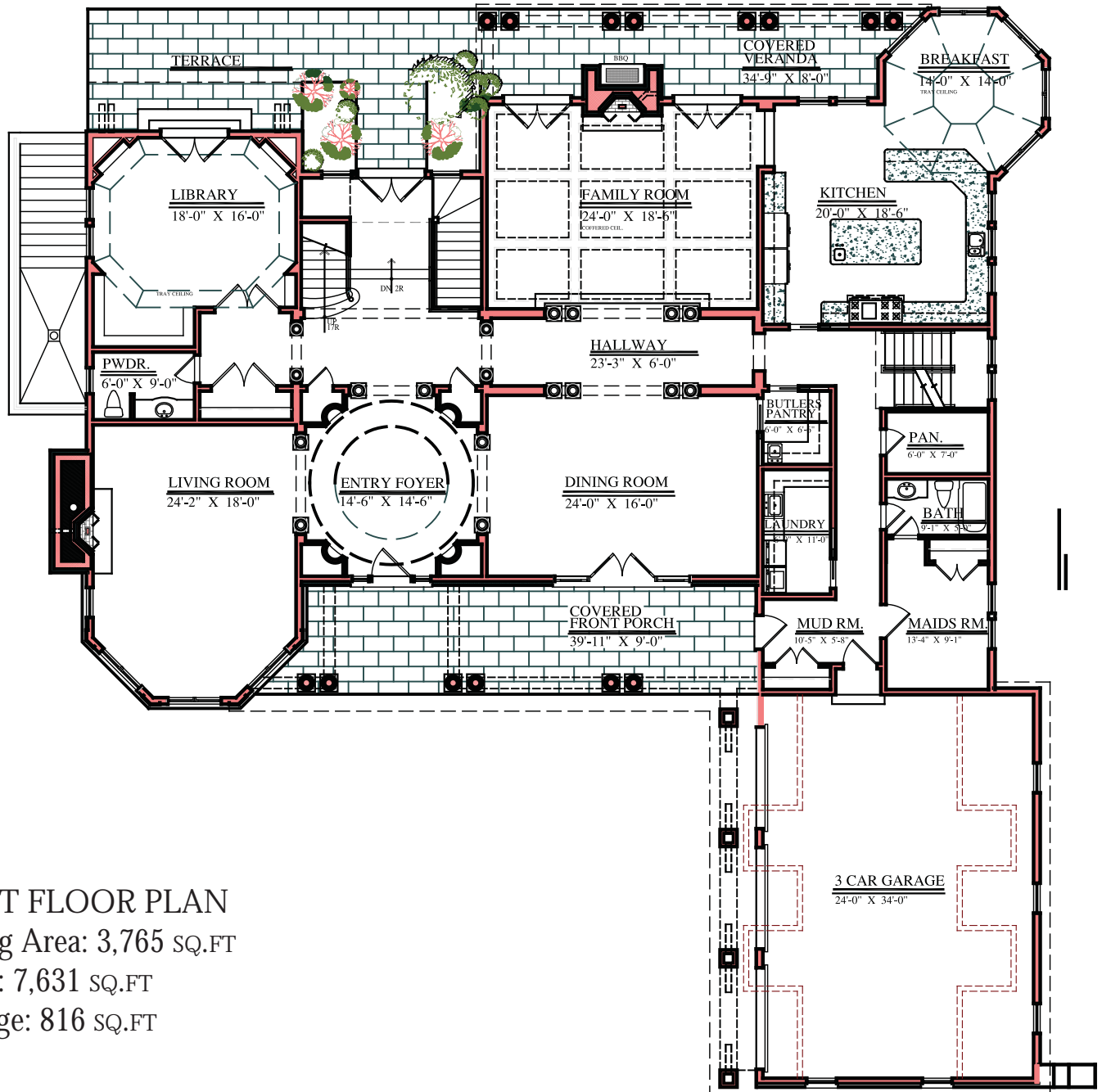




Sarosca Farm

ESTATES



FIRST FLOOR PLAN
Living Area: 3,765 sq.ft
Total: 7,631 sq.ft
Garage: 816 sq.ft

SHINGLE STYLE

studio rai

Architectural Design P.C.

290 SALEM RD.
POUND RIDGE, NY 10576
Tel.: 914-273-6843 Fax: 914-763-0216
WWW.STUDIORAI.COM

Sarosca Farm Estates Sales Center

3 STONE BRIDGE ROAD
PURCHASE, NEW YORK 10577
914.358.1533

SALES@SAROSCAFARM.COM

WWW.SAROSCAFARM.COM

FLOORPLANS ARE FOR ILLUSTRATIVE PURPOSES ONLY.
SQUARE FOOTAGE IS AN APPROXIMATION.

HOULIHAN LAWRENCE
PROJECT MARKETING

