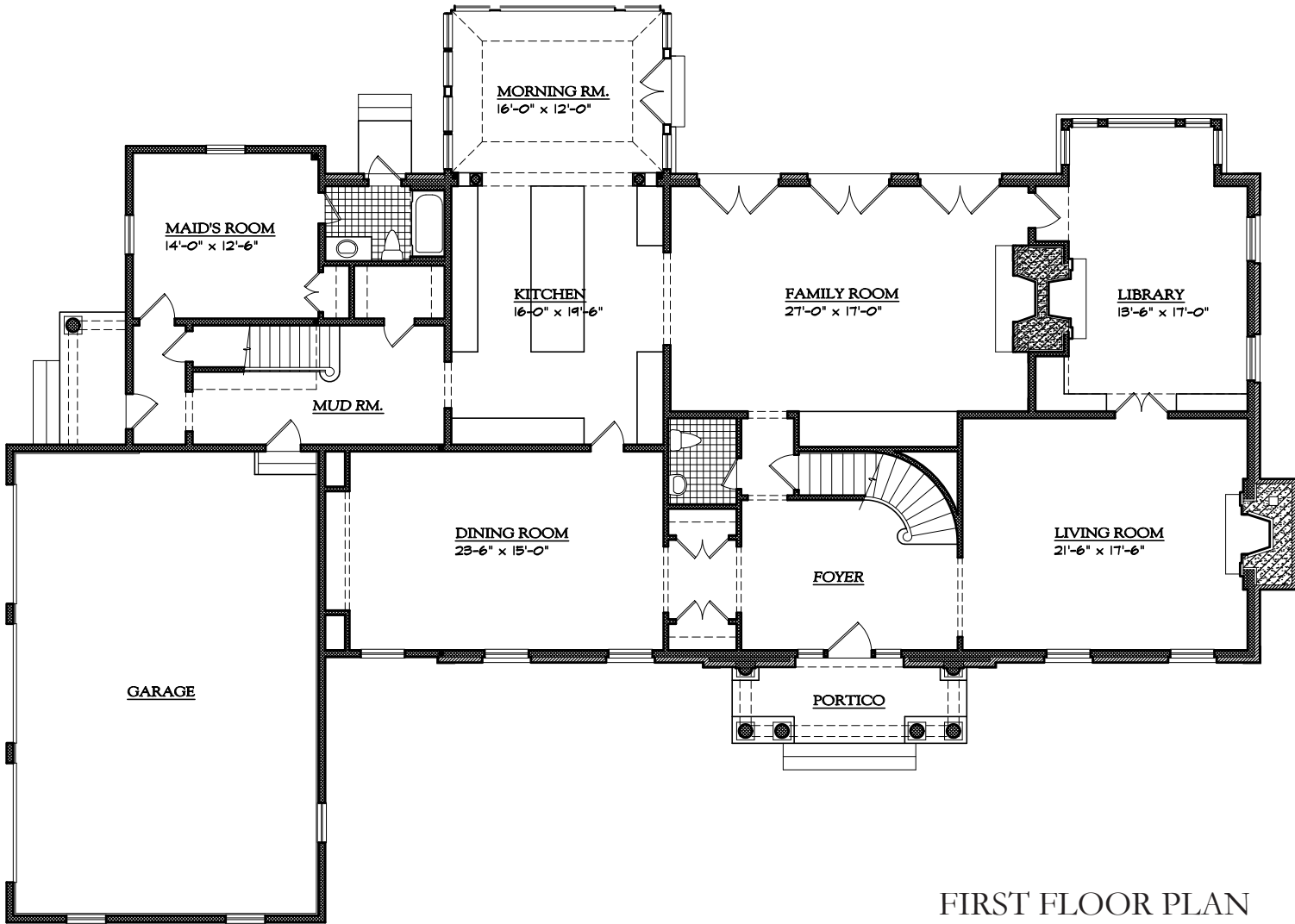




Sarosca Farm

ESTATES



FIRST FLOOR PLAN

Living Area: 3,212 sq.ft

Garage: 864 sq.ft

Total: 6,636 sq.ft

NEO-GEORGIAN HOUSE

ARCHITECT

JUSTIN F. MINIERI, AIA

NCARB MEMBER

P.O. BOX 1439 • NEW ROCHELLE • NY 10802

914.576.7087 TEL 914.355.5238 FAX

DOCUMENT COPYRIGHT • Drawings and specifications are protected by copyright laws and shall remain the property of Justin F. Minieri, P.A. Any use or reproduction, in whole or in part, of these documents without written authorization by contractor is strictly prohibited.

Sarosca Farm Estates Sales Center

3 STONE BRIDGE ROAD

PURCHASE, NEW YORK 10577

914.358.1533

SALES@SAROSCAFARM.COM

WWW.SAROSCAFARM.COM

FLOORPLANS ARE FOR ILLUSTRATIVE PURPOSES ONLY.

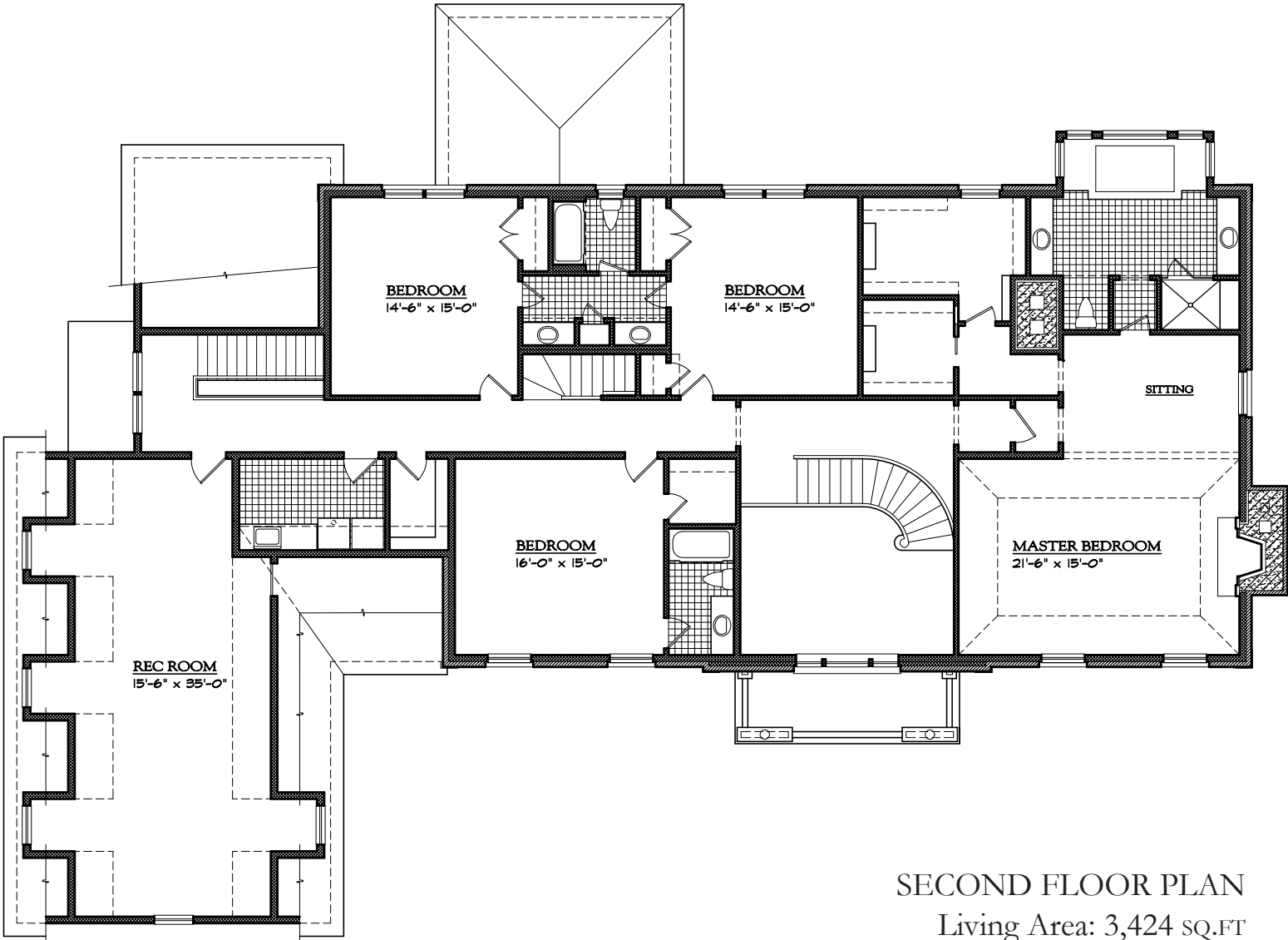
SQUARE FOOTAGE IS AN APPROXIMATION.

HOULIHAN & LAWRENCE
PROJECT MARKETING



Sarosca Farm

ESTATES



SECOND FLOOR PLAN

Living Area: 3,424 SQ.FT

Total: 6,636 SQ.FT

NEO-GEORGIAN HOUSE

ARCHITECT



JUSTIN F. MINIERI, AIA

NCARB MEMBER

P.O. BOX 1439 • NEW ROCHELLE • NY 10802
914.576.7087 TEL 914.355.5238 FAX

DOCUMENT COPYRIGHT © Drawing and specifications are protected by copyright laws and shall remain the property of Justin F. Minieri, AIA. Any use or reproduction, in whole or in part, of these documents without written authorization by contract is strictly prohibited.

Sarosca Farm Estates Sales Center

3 STONE BRIDGE ROAD

PURCHASE, NEW YORK 10577

914.358.1533

SALES@SAROSCAFARM.COM

WWW.SAROSCAFARM.COM

FLOORPLANS ARE FOR ILLUSTRATIVE PURPOSES ONLY.

SQUARE FOOTAGE IS AN APPROXIMATION.

HOULIHAN  LAWRENCE
PROJECT MARKETING